

Mouse: SAATKO (3 separate RXNs)

Allele Name: SAA3KO

Genotyping information

Primers

mSAA3 WT F: CCTGGGAGTTGACAGCCA

mSAA3 KO F : CTAGTAAAAAGCTTGTGACAGCC

mSAA3 common R : GA CGT GAA CTG CTC ATC ACT CTC CAC AAG

For SAA3 WT allele : mSAA3 WT F + mSAA3 common R (390bp)

For SAA3 KO allele : mSAA3 KO F + mSAA3 common R (390bp)

The PCR products can't be distinguished by size → PCR amplification separately

-PCR condition

95C 4 min

95C 15sec

62C 15sec

72C 30sec

72C 5min

4C forever

} 25cycle

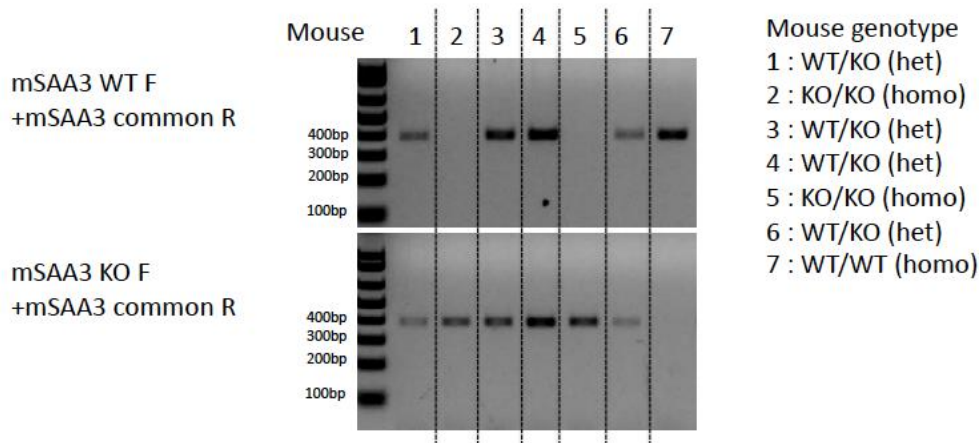
If you use low annealing temperature or more PCR cycle,
You may see high background signals.

Running parental (SAA3het or SAA1/2/3TKOhet) DNA together with
pup's genomic DNA is recommended.

Premature stop codons were inserted into WT or SAA1/2DKO allele.

→ For SAA1/2/3TKO genotyping, SAA3WT, SAA3KO and SAA1/2DKO PCRs are
recommended.

Genotyping example



Allele Name: SAA1/2KO

Primers

SAA WT 5' = TCA CCT AGA CCC ATA GAT CAC

SAA WT 3' = CTT TCA GTC AGA TCA GAT TGG

SAA DKO 5' = CCT ACC CGG TAG ATT GAA G

PCR Product

SAA WT5' + SAA WT 3' = 743bp

SAA DKO 5' + SAA WT 3' = 303bp

PCR Program

95C 4 min

95C 15sec |

55C 15sec | x35

72C 45sec |

72C 5min

4C forever